

2010 Boys Lacrosse

Rule Changes and Clarifications

1

Major Rule Revisions



2

Number and Designation of Players

2-1-1

Ten players constitute a full team. They shall be designated as follows: Goalkeeper, Defense, Midfield, Attack. A team shall begin the game with at least 10 players, and must have a legally equipped goalkeeper on the field at all times, or forfeits the game.

3

Number and Designation of Players

2-1-1

The revision to rule 2-1-1 specifies procedure should a team not have a legally equipped goalie on the field at the start of the game. This change minimizes risk for players.

4

Facing Off
4-3-4

The official shall make certain that the reverse surfaces of the crosses match evenly, and are perpendicular to the ground. Each player shall have both hands and fingers wrapped around the handle of his own touching the ground but not touching any strings of the crosse. The right hand may not touch any part of the head of the crosse.....

5

Facing Off
4-3-4

The revision to rule 4-3-4 equalizes the faceoff by requiring both players to completely wrap their hands around the crosse.

6

Body Checking
4-16

Body checking of an opponent in possession of the ball or within five yards of a loose ball or when the ball in flight is within five yards of the player, from the front or side above the waist and below the neck is legal.

7

Body Checking
4-16

The revision of rule 4-16 was added to clarify that a player receiving a pass cannot be checked unless the ball is 5 yards or less from the player receiving the pass.

*Any avoidable act on the part of a player that is deliberate and excessively violent, whether it be with the body or crosse is unnecessary roughness. This may include a legal body check.

8

Holding
6-3-2f

A player may not hold the crosse of his opponent using any part of his body.

9

Holding
6-3-2f

The revision to rule 6-3-2f makes it explicit that a player locking down with his arm or any other part of his body over another player's crosse is illegal. It also makes it explicit that a faceoff man cannot grasp any part of the opponent's stick during the faceoff.

10

Illegal Procedure
6-5-2t

Failure to have a properly equipped designated goalkeeper on the field of play.

11

Illegal Procedure
6-5-2t

The revision to rule 6-5-2t clarifies the penalty assessed when a team does not have a legally equipped goalkeeper on the field during the course of play.

12

Major Editorial Rule Revisions



13

Facing Off 4-3-1

Exception:

In the event of an extra-man situation or flag-down situation at the conclusion of any period, the next period shall be commenced by awarding possession of the ball in the same relative position on the field to the team that had possession of the ball (or is entitled to possession by a play-on) at the Conclusion of the prior period.

14

Facing Off 4-3-1

This editorial revision of rule 4-3-1 clarifies that a “play-on” call denotes possession.

15

Out of Bounds 4-6-3a

When a loose ball touches a boundary line or the ground outside the boundary line, or when it touches anything or the boundary line or outside the boundary line, it is out of bounds, and the following rules apply: a) Except on a shot or deflected shot at the goal, the ball shall be awarded at the point where it was declared out of bounds to any player on the team opposing that of the player who last touched the ball, who is ready immediately to make a free play. In the case of a loose ball declared out of bounds, the location of the restart is determined by the point where the ball broke the plane of the boundary line.

16

Out of Bounds

4-6-3a

This revision of rule 4-6-3a clarifies location of the ball for restart when a loose ball has been declared out of bounds.

17

Goal Not Counted

4-9-2k

A goal shall be disallowed: k) When the scoring player's crosse is found to be illegal, or if the Scoring player adjusts the strings before the official requests it, or adjusts the crosse in any way after the official asks for it.

18

Goal Not Counted

4-9-2k

This new wording of 4-9-2k clarifies when a goal will be disallowed if a scorer adjusts his crosse and puts the rule in agreement with 5.4 Situation D and E

19

Resuming Play After A Penalty

7-3

When a penalty occurs and the ball is in the offended team's offensive half of the field, the ball shall be put in play by the team awarded the ball, at the spot where the ball was when play was suspended. If the ball was in the goal area when play was suspended. It shall be restarted laterally outside the goal area nearest the spot of the ball at the time of the whistle. If the ball crossed the end line prior to the penalty occurring the ball shall be restarted at that spot.

20

Resuming Play After A Penalty

7-3

This revision of rule 7-3 prevents the offensive team from being disadvantaged by a defensive foul. Defense would no longer be able to push the restart laterally outside the goal area by fouling after Team A is awarded the ball on the end line.

21

Situations and Rulings



22

2.1 Situation B

Goalkeeper B1 must leave the game due to injury, expulsion or penalty. Team B refuses to send in another player to play that position.
Ruling: Team B must put a legally equipped goalkeeper on the field or it forfeits the game. The official will allow a full one-minute delay for replacing the goalie on the field beginning with the warm-up.

23

4.3 E Situation

(1) Team A has a one man advantage or (2) both teams are even strength. B1 has possession and A1 commits a penalty; flag down, ball becomes loose as period ends.
Ruling: (1) Next period begins with a faceoff as both teams are down one man each (2) Team B retains possession to begin the next period

24

4.5 Situation

During normal play A1 makes a pass to A2.

While the ball is in flight, B1 commits a) a technical foul or b) a personal foul.

Ruling: In a), the official calls out "play-on" and the play-on is over if the pass is completed. If the pass is not completed, award the ball to Team A. In b), flag down, slow whistle.

25

4.6 Situation H

A1 throws the ball far downfield where it is declared out of bounds.

Ruling: Team B awarded the ball at the spot where the ball broke the plane of the boundary line.

26

4.9 Situation B

Shooter A1's crosse makes contact with any part of the goal or goalkeeper in his crease before the ball enters the goal.

Ruling: No goal. Technical foul (interference)

27

4.10 Situation K

Team A has 3 or more players serving penalties when a faceoff occurs.

Ruling: Team A's faceoff player's gloved hands grasping the crosse may touch the center line during the faceoff. This is not considered an offsides violation.

28

5.8 Situation

A1 with possession of the ball advances toward a stationary defender B1 and with a bull-dodge runs over B1.

Ruling: Personal foul (unnecessary roughness) if A1's actions are deliberate and excessively violent.

29

5.8 Situation F

Anytime during live play, when a technical foul occurs on Team A, followed by a personal foul on Team B, then these fouls are considered SIMULTANEOUS. If a personal foul occurs on Team A and a live ball technical foul is committed by Team B, then the technical foul kills the flag down situation. These are NOT considered simultaneous. The flag denotes possession and Team B (in possession at the time of the flag) would retain possession.

30

6.2 Situation E

A1 interferes with goalkeeper B1 who has possession of the ball in the crease. Is this a slow whistle or a play-on?

Ruling: Play-on. If there is already a flag down for a Team A infraction, then a second flag is thrown and the slow whistle continues.

31

6.3 Situation F

A1 with the ball in possession locks down his free arm (or arm pit) over B1's crosse.

Ruling: Technical foul (holding) against A1.

32

7.3 Situation B

A1 gains possession in his defensive end and is fouled by B1, flag down. A1 passes to goalkeeper A2 who is in his crease. B2 (1) interferes with A2 or (2) checks the ball out of A2's crosse while A2 is still in the crease.

Ruling: Since there was a flag down in (1) a second flag would be thrown and the slow whistle would continue or (2) The whistle must sound as soon as the ball touches the ground. B2 serves 30-seconds for the goal interference foul.

33

7.3 Situation C

Ball crosses the end line in Team A attack area. Team A awarded possession. Either team calls a timeout. Before restart, Team B commits a foul.

Ruling: Team B penalty is assessed; ball is restarted at the same spot on the end line and is NOT move laterally outside the goal area

34

7.6 Situation P

Goalkeeper (B1) has possession of the ball within his crease, at which time A1 checks B1's crosse. Official signals "play-on". In retaliation, B1 intentionally slashes A1 on the follow through of his outlet pass.

Ruling: Simultaneous fouls. Both A1 and B1 serve penalty time, with the first 30-seconds non-releasable. Ball is awarded to Team A1 (lesser amount of penalty time), 20-yards lateral from the goal

35

2010 POINTS OF EMPHASIS

- Pre-game Management
- Enforcement of Illegal Body Checks & Late Hits
- Unnecessary Roughness - punch check
- Stalling
- Crosse Specifications
- Crosse Construction
- Cross Checks
- Pushing
- Illegal screens

36

Questions - Rule Interpretations

Contact: Lee Spitzer

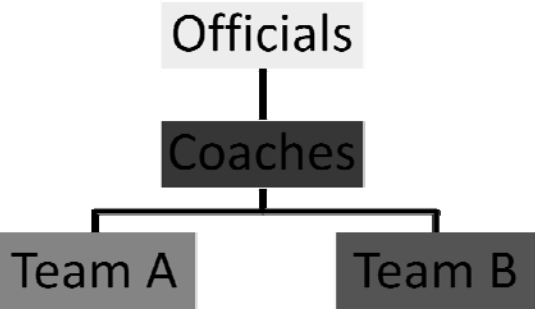
- e-mail: lee.spitzer@colaxo.org
or
laxspitz@columbus.rr.com
- phone: 614.459.2728

37

Questions

- First, contact your state association for interpretations. If your state association does not administer lacrosse, contact the NFHS office.
- Kent Summers, NFHS Boys Lacrosse Rules Editor
 - 317-972-6900
 - ksummers@nfhs.org

38



39